

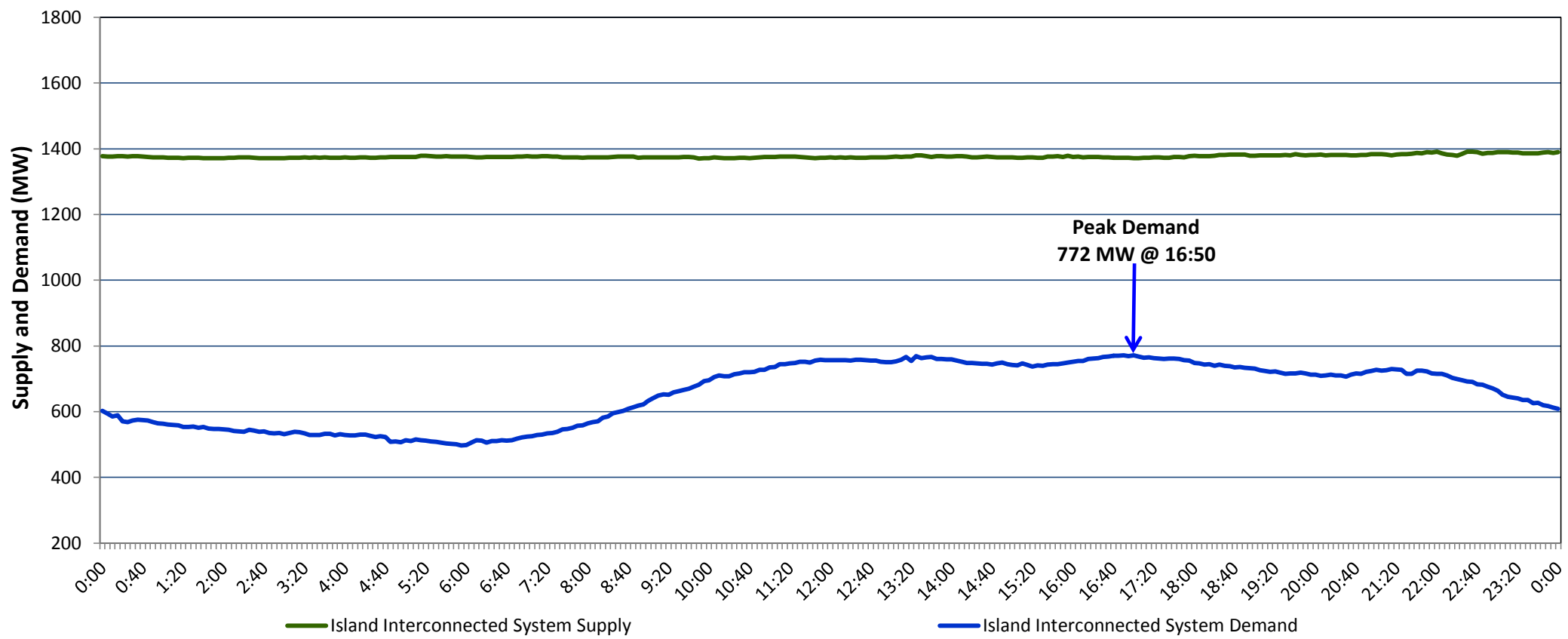
Newfoundland Labrador Hydro (NLH)

Supply and Demand Status Report Filed Monday, July 31, 2017

Section 1

Island Interconnected System Supply and Demand

Actual 24 Hour System Performance For Sunday, July 30, 2017



Supply Notes For July 30, 2017

- 1,2
- A

As of 1858 hours, June 22, 2017, Stephenville Gas Turbine available at 25 MW (50 MW).
- B

As of 0938 hours, June 23, 2017, Holyrood Unit 1 unavailable due to planned outage 120 MW (170 MW).
- C

As of 1018 hours, July 07, 2017, Granite Canal Unit unavailable due to planned outage (40 MW).
- D

As of 1314 hours, July 11, 2017, St. Anthony Diesel Plant available at 8.85 MW (9.7 MW).
- E

As of 2000 hours, July 14, 2017, Holyrood Unit 3 available but offline for economic dispatch (150 MW).
- F

As of 1058 hours, July 23, 2017, Bay d'Espoir Unit 1 unavailable due to planned outage (76. 5 MW).
- G

As of 2355 hours, July 29, 2017, Holyrood Unit 2 was removed from service for economic dispatch 165 MW (170 MW).

Section 2

Island Interconnected System Supply and Demand

Mon, Jul 31, 2017 Island System Outlook ³			Seven-Day Forecast	Temperature (°C)		Island System Daily Peak Demand (MW) Forecast
				Morning	Evening	
Available Island System Supply: ⁵	1,365	MW	Monday, July 31, 2017	14	17	785
NLH Generation: ⁴	1,060	MW	Tuesday, August 01, 2017	12	12	800
NLH Power Purchases: ⁶	105	MW	Wednesday, August 02, 2017	15	13	780
Other Island Generation:	200	MW	Thursday, August 03, 2017	14	13	785
Current St. John's Temperature:	14	°C	Friday, August 04, 2017	14	15	785
Current St. John's Windchill:	N/A	°C	Saturday, August 05, 2017	16	16	770
7-Day Island Peak Demand Forecast:	800	MW	Sunday, August 06, 2017	16	17	775

Supply Notes For July 31, 2017

- 3
- Notes:
1.

Generation outages for running and corrective maintenance are included. These are not unusual for power system operations. They generally do not impact customer supply. The power system operators schedule outages to system equipment whenever possible to coincide with periods when customer demands are low and sufficient supply reserves are available. However, from time to time equipment outages are necessary and reserves may be impacted.
2.

Due to the Island Interconnected System being isolated from the larger North American grid, when there is a sudden loss of large generating units some customer's load must be interrupted for short periods to bring generation output equal to customer demand. This automatic action of power system protection, referred to as under frequency load shedding, is necessary to ensure the integrity and reliability of system equipment. Under frequency events typically occur 5 to 8 times per year on the Island Interconnected System and the resultant customer load interruptions are generally less than 30 minutes.
3.

As of 0800 Hours.
4.

Gross output including station service at Holyrood (24.5 MW) and improved NLH hydraulic output due to water levels (35 MW).
5.

Gross output from all Island sources (including Note 4).
6.

NLH Power Purchases include: CBPP Co-Gen, Nalcor Exploits, Rattle Brook, Star Lake, Vale capacity assistance (when applicable), and Wind Generation.

Section 3

Island Peak Demand Information

Previous Day Actual Peak and Current Day Forecast Peak

Sun, Jul 30, 2017	Actual Island Peak Demand ⁸	16:50	772 MW
Mon, Jul 31, 2017	Forecast Island Peak Demand		785 MW

Notes:

8. Island Demand is supplied by NLH generation and purchases, plus generation owned and operated by Newfoundland Power and Corner Brook Pulp & Paper (Deer Lake Power, DLP).